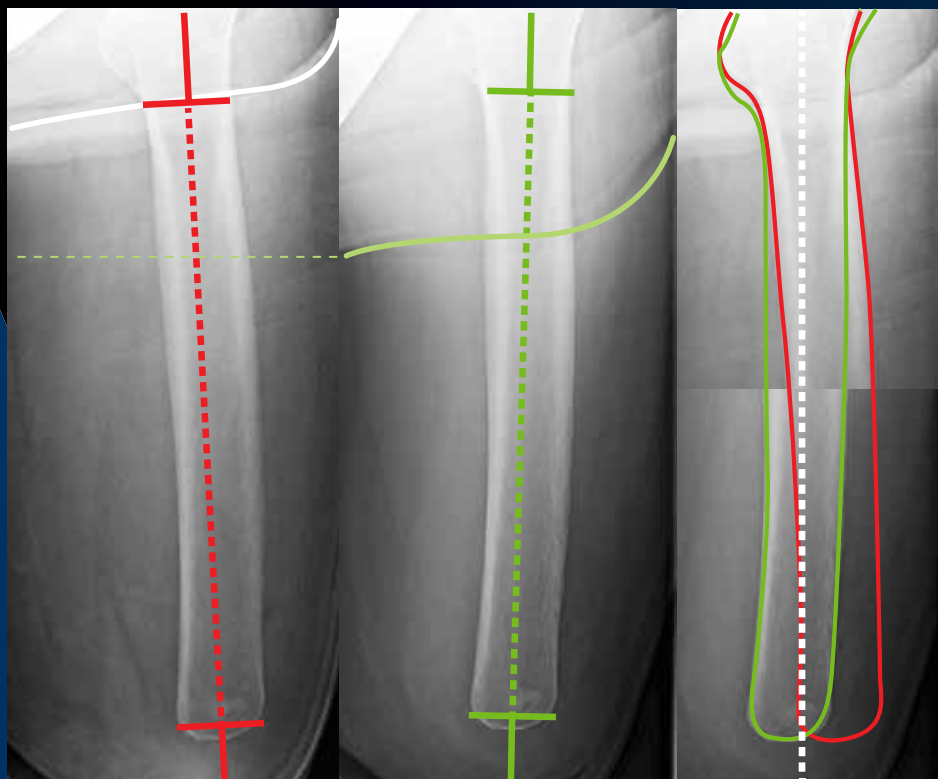


We can't control rac audits or reimbursement, but now we CAN control the bone

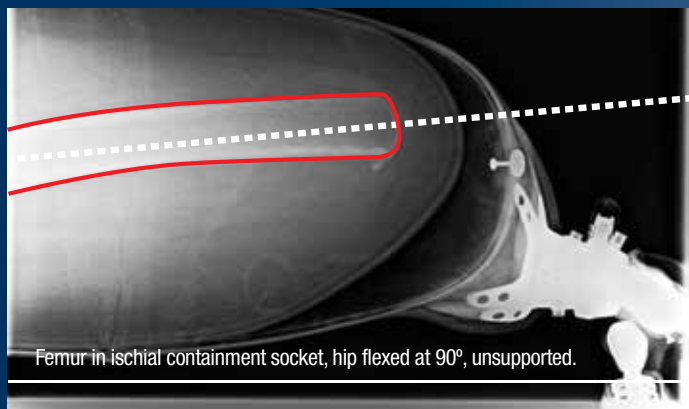


Femur in ischial containment socket, patient standing equally weighted, abducted.

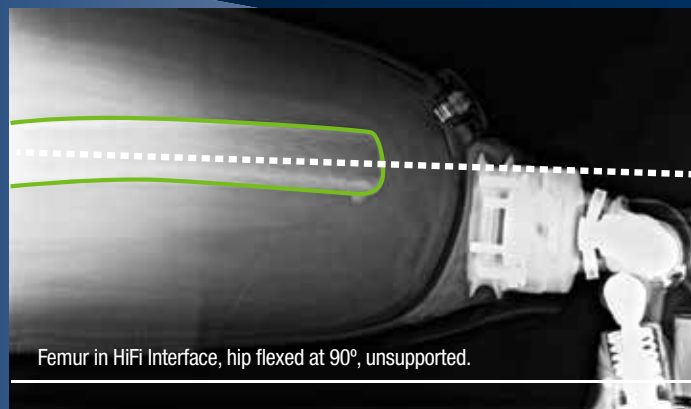
Femur in sub-ischial HiFi Interface, patient standing equally weighted, abducted.

Comparison shows improved bone position.

We were taught sockets can't adequately control the femur and that was true... until now. The **HiFi™ Interface System** with patented technology allows you to achieve bone stabilization and control like never before and significantly lower trim lines. Become trained and licensed in the HiFi Transfemoral Interface System, the most biomechanically advanced design available.



Femur in ischial containment socket, hip flexed at 90°, unsupported.



Femur in HiFi Interface, hip flexed at 90°, unsupported.

©2014 biodesigns, inc.



For more information, visit
www.JoinHiFi.com / www.biodesigns.com
P/F 800.775.2870 · HiFi@biodesigns.com

Follow biodesigns & HiFi    

Register today for our upcoming training in New Orleans · February 18