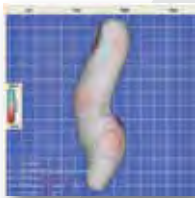


# Welcome to Boston Brace



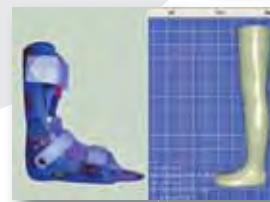
Powerful partnerships have redefined Boston Brace by enhancing our strengths while creating new and better ways to treat more patients.



**RODIN**  
O&P CAD/CAM system

- X ray mapping for scoliosis modification
- 510(k) approval for cranial remolding since 2008
- Functional assistance and tonal control for neuromuscular patients
- Lower limb carving & fabrication by CAD

**DMO**<sup>®</sup>



## PARTNERSHIP HAS BENEFITS:

*“My practice has grown and diversified substantially since partnering with Boston Brace. We were simply a customer to our previous CAD system and helmet provider. Boston Brace helps us in every step of the patient care process.”*

— James Haas, CO & Owner, O&P Labs. Springfield, MA

**Could your company be our next partner?**

Contact us at 800.262.2235 or [customerservice@bostonbrace.com](mailto:customerservice@bostonbrace.com)

Visit our website at [www.bostonbrace.com](http://www.bostonbrace.com)