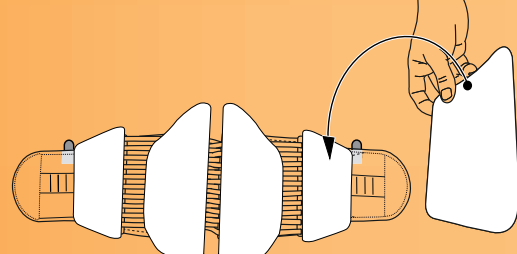




NEW PDAC APPROVED MODELS

X2 L0637 or L0650

XL L0637 or L0650

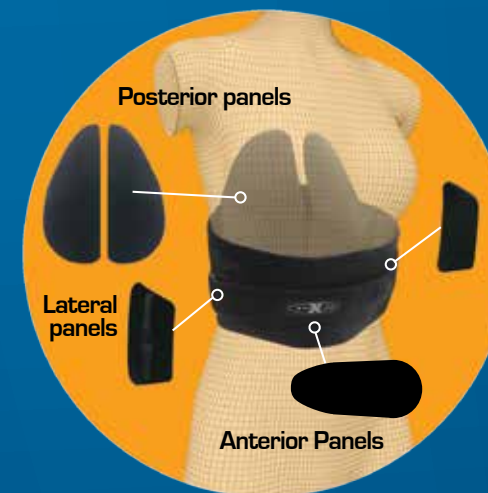


2 POSTERIOR & 2 LATERAL PANELS



2 POSTERIOR PANELS WITH LATERAL SUPPORT INCORPORATED

The **New STEALTH™ ONE** can be customized to virtually any body type and size with our unique **ONE-SIZE-FITS-ALL** design, which means less inventory on your shelves and more money in your pocket. The Stealth™ One step-down design provides precise support throughout patient rehabilitation, while providing maximum comfort and increased patient compliance. A patented, patient friendly, easy-pull mechanical locking technology allows patients to adjust compression and control motion while standing, sitting, ambulating, etc. The posterior panel is available in our dual migrating posterior panel design, which creates a natural support system for the spine, or single posterior panel. Anterior panels are included for abdominal support, and, when combined with lateral and posterior panels, provide intra-abdominal pressure to reduce load on discs, thus alleviating pain while improving your patient's outcome.

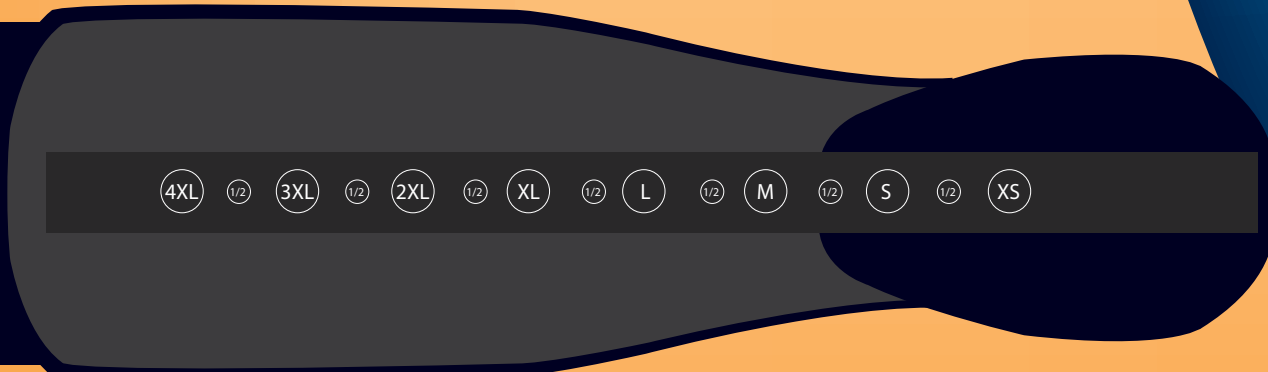
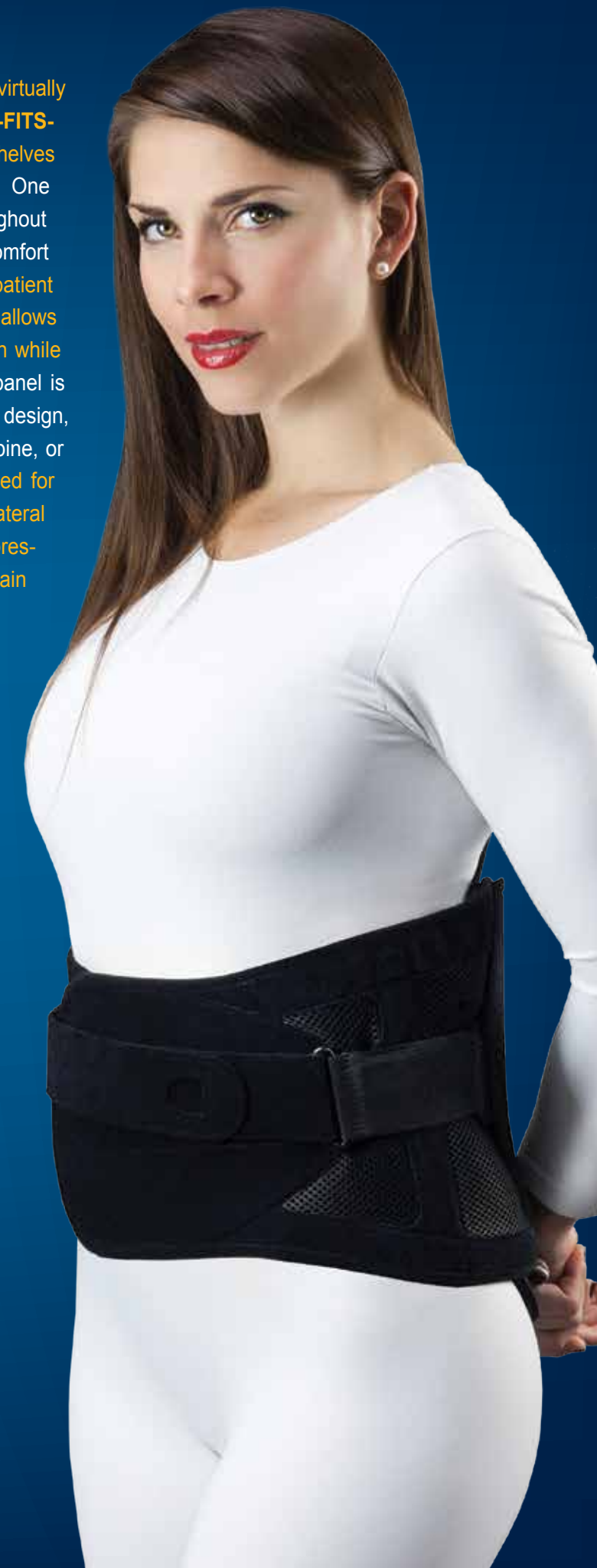


- Less Inventory to Stock
- Cost Effective
- Mechanical locking technology
- Arthritic Grips
- Streamline Design - No Bulk!!!
- Designed to maximize air-flow



MANUFACTURING SPECIALIST

WWW.OPTECUSA.COM



CUSTOM SIZES • ONE • SIZE • FITS • ALL