

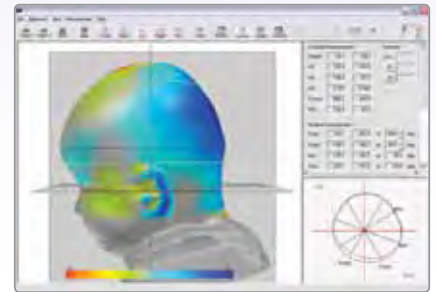
Visit us at ACPOC! Tables 26-27

ORTHOMERICA® Pediatrics Head to ToeSM

The STAR™ Family of Cranial Remolding Orthoses has been used to treat positional Plagiocephaly, Brachycephaly, Scaphocephaly and other head shape deformities in infants 3-18 months of age since 2000. Tens of thousands of infants have been successfully treated with the STARband®, the first cranial remolding orthosis with FDA clearance available to O&P practitioners across the United States and around the globe. And recently, Orthomerica has received FDA clearance and is now the first cranial remolding orthosis manufacturer to provide orthotic management for post-operative Craniosynostosis to the O&P profession. Orthomerica's cranial remolding orthoses can be fabricated from an unmodified cast, or a scan of the infant's head using the STARscanner™.



STARscanner™ Laser Data Acquisition System—replaces the need for plaster casting. In less than 2 seconds, the eye-safe laser collects the baby's head shape data. 3-D data can be viewed in multiple planes with detailed analyses that help determine the severity of asymmetry. This captured data is transmitted to Orthomerica for fabrication of the cranial orthosis. Additional scans document treatment progress, offering quantitative outcomes to insurance carriers, physicians and parents.



Custom Spinal Orthoses—join practitioners from major children's hospitals who trust Orthomerica to fabricate custom spinal designs for their patients with scoliosis and kyphosis. Each orthosis is precisely fabricated to produce symmetry, correction, and control.



TC Flex™ AFO System —a progressive orthotic management system for patients with neuromuscular, sensorimotor, orthopaedic and physical challenges. These custom molded orthoses are designed to stabilize the structures of the foot and ankle complex to enable the patient to utilize current and potential muscle capabilities.



KC Combo™—provides proximal alignment and stability to an Orthomerica AFO, including TC Flex™ designs, by adding this Knee Control Orthosis. A ring pin fastener allows quick attachment/detachment without the use of tools. An adjustment option allows for patient growth.

Newport® jr Hip System—with the new pj—Virtual® Pediatric Joint enhances hip stability by supporting and positioning the hips in optimal alignment while allowing controlled range of motion. This pediatric hip orthosis can be used post-operatively to maintain the corrected surgical position, or to maximize function during activities of daily living.



Pediatric UFO™—a comfortable, prefabricated orthosis for stretching and maintaining dorsi-flexion range of motion. This unique lower-limb orthosis positions the foot and ankle in optimal alignment for placing stretch on the soleus while the patient is sleeping. When used in conjunction with a knee immobilizer, this orthosis can also stretch the two-joint gastrocnemius group.

