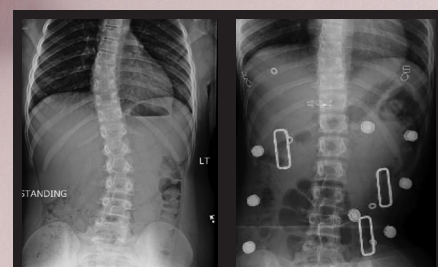


Think she's worrying about wearing a Scoliosis brace at school? Dream On.

The Providence Nocturnal Scoliosis® Orthosis is worn while the patient sleeps, which maximizes compliance.

It lets kids... be kids.



Out of Brace
(Standing)

In Brace
(Supine)

A past study has shown that the Providence brace, a spinal orthosis worn only at night, is just as effective in the treatment of adolescent idiopathic scoliosis as full-time braces. That's important for two reasons; the human growth hormone (HGH) in

children has been shown to peak at night, and compliance increases when spinal braces don't interfere with a child's daytime activities. Spinal Technology is proud to be the exclusive manufacturer of the Providence Nocturnal Scoliosis® System.

Send your orders to: orders@spinaltech.com
Call us for more information: 800 253 7868

Follow us
[@spinaltechnologyinc](https://www.instagram.com/spinaltechnologyinc)



Spinal
Technology, Inc.

